



600 HP Form Wound AC Drilling Motor – HAW12BB060



High Power Density Technology

Up To 600 HP in a Standard 400 HP Frame

Drill deeper, faster and more efficiently with High Power Density motors from Houma Armature. Utilizing proprietary intra-slot cooling technologies, the HAW12BB060 delivers up to 50% more horsepower and torque than similar motors, and will withstand rigorous high shock and vibration conditions for decades of continuous service in harsh environments.

Standard Features

- 4-pole stator with form wound windings
- Certified Class H insulation
- Cast aluminum rotor bars
- 2-cycle global VPI
- Constructed with nodular cast iron
- Designed for Variable Frequency Drive (VFD) operation
- Heaters — 1 each end
- 4140 & 4340 alloy shafts available

- IP 23 motor enclosure
- Shaft seals and oil slingers on the drive and non-drive sides
- Six (6) 100Ω platinum RTDs; 2/phase embedded in stator
- ISO 9001:2015-certified

Optional Features

- Encoder
- Bearing RTD
- Blower assembly
- Air pressure switch
- IP 56 junction box
- ABS certification



ISO 9001:2015-certified



ATEX-approved



CSA-approved

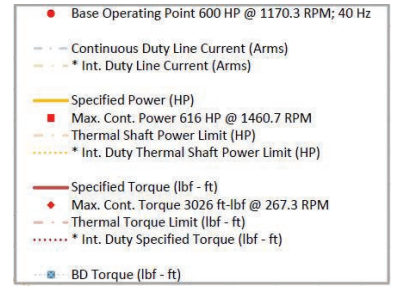
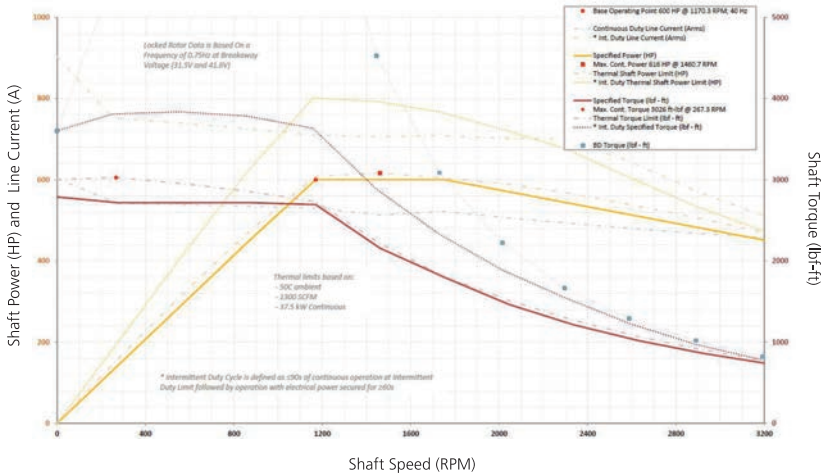


Made in the USA

600 HP AC Drilling Motor



Speed - Torque Performance That Leads the Industry

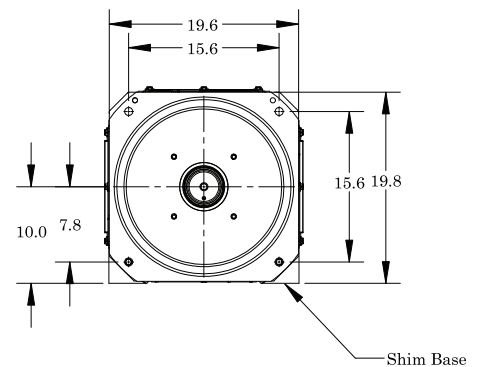
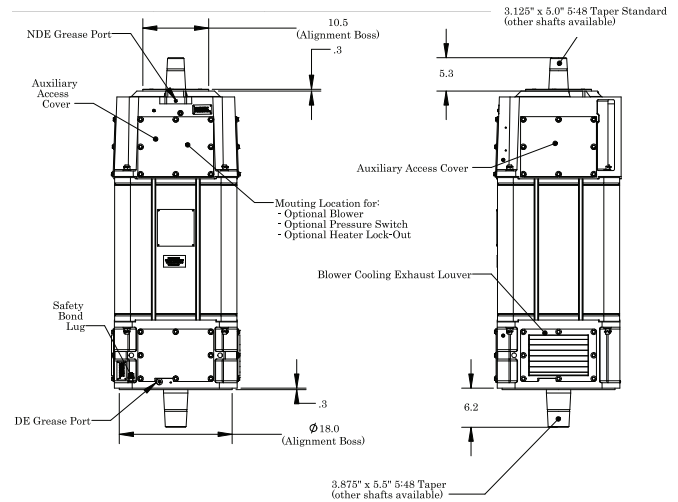


Critical Data

Model number	HAW12BB060
Voltage (AC)	580
Current (Amps)	540
Rated Speed	1172 RPM
Torque (lbf-ft)	2690 at rated speed
HP	600 at rated speed
Max. permissible speed	2340 RPM
Base motor weight	2,650 lb.
Rotor weight	780 lbs (354 kg)
Recommended blower CFM	1500
Nominal resistance / phase @ 25 °C	0.0139
Rotor balance	20.4 gram inches
Standard bearing grease	Chevron Black Pearl*
Megger resistance	20 MΩ

* Others available upon request.

Dimensions



Houma Armature Works is a global provider of highly engineered motors, controls and integrated solutions that power Oil & Gas exploration. We provide benchmark performance, productivity, durability and customer support primarily for Top Drives, Mud Pumps, Draw Works, Rotary Tables, Engine Control and Control Houses. Learn more at www.houmaarmature.com.

2534 Cummins Road, Houma, LA 70363 | 800.673.0531
8100 McHard Road, Houston, TX 77053 | 713.748.0702